

The EIT KIC Co-location Centres: Concept and Practice

José-Manuel Leceta - EIT Director

Brussels - 15 March 2012

ABOUT DISCOVERY, INVENTION, TRANSLATION & INNOVATION

1

Discovery:

Finding out something
not yet known

2

Invention:

creating or designing
something not existing
before

3

Translation:

processing discoveries and/or
invention into innovation

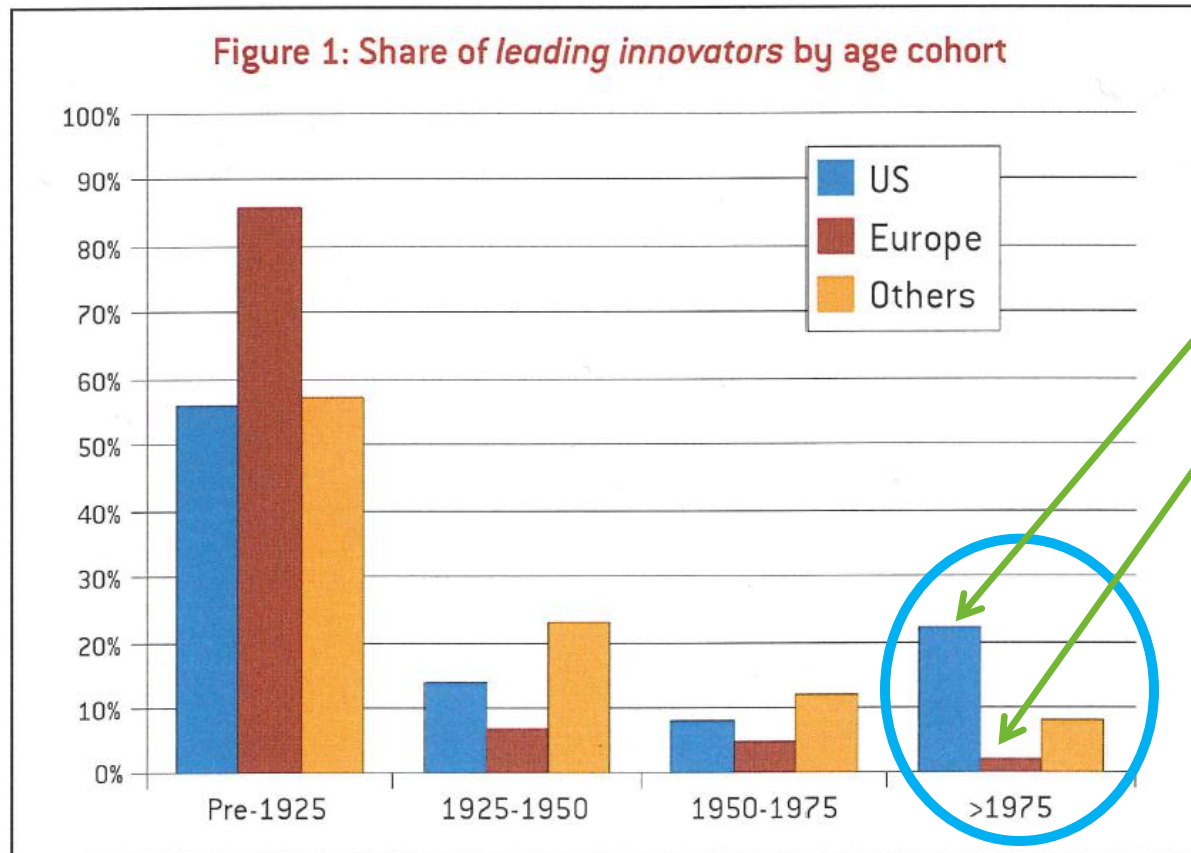
4

Innovation:

making changes with societal
impact based on discoveries
and/or invention

**Excellent science & research are
necessary yet not sufficient ingredients
for innovation**

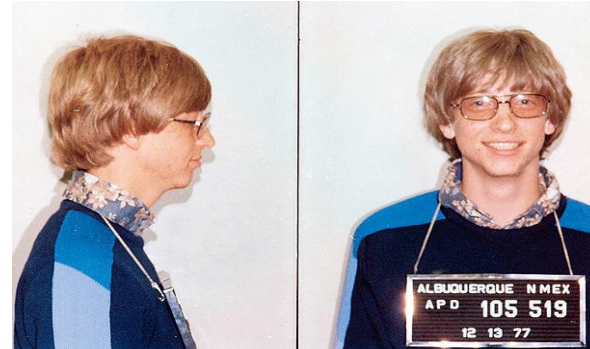
AGE DISTRIBUTION OF COMPANIES' CONTRIBUTION TO INNOVATION: EUROPE V. US AND OTHERS



US: approx.
21%
EU: approx.
2%

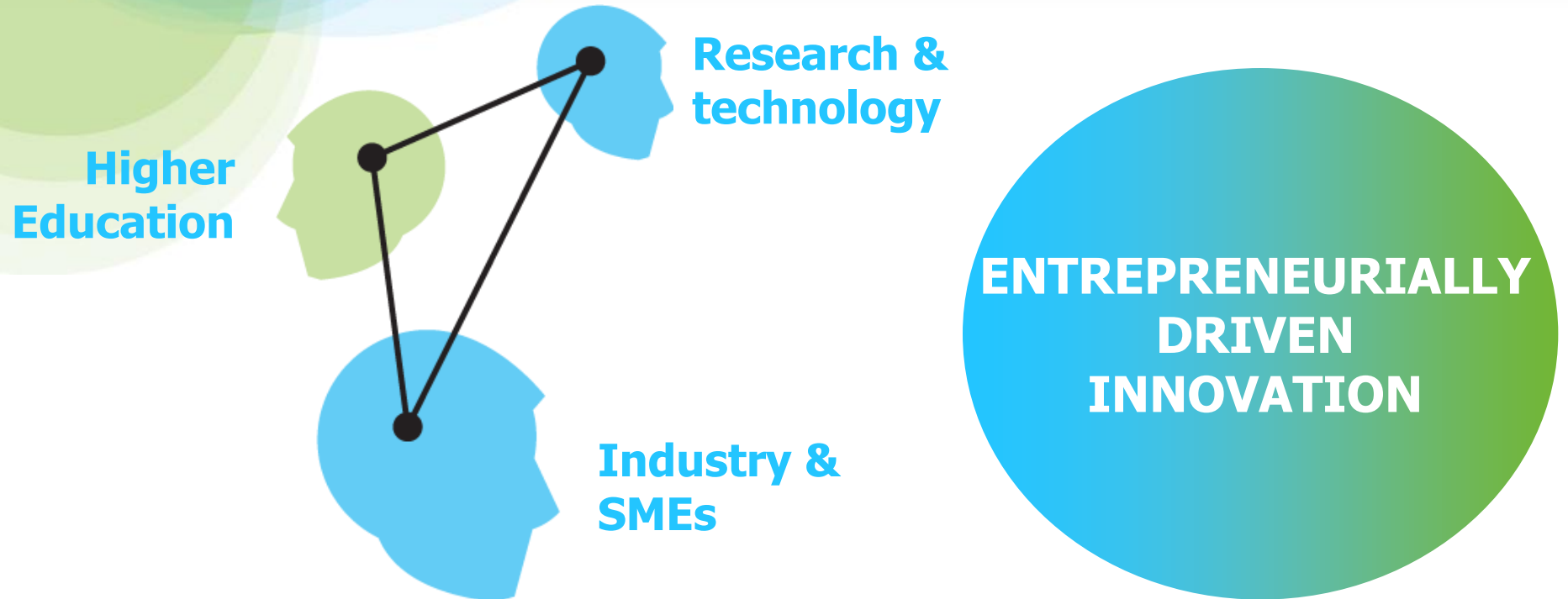
BEHRING, NOBEL, CITROEN, SIEMENS, REUTER = EUROPEAN HISTORY
BOYER, GATES AND ZUCKERBERG = U.S. REALITY!

**HOW
to motivate kids
to set up garage
companies in
Europe?**



wanted

THE CORE OF INNOVATION IS THE KNOWLEDGE TRIANGLE

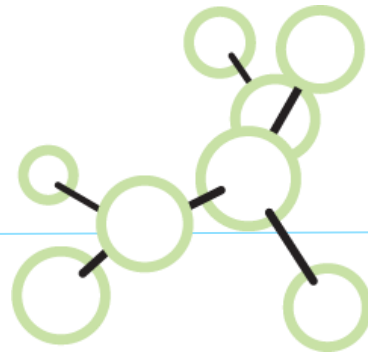


Actors within the knowledge triangle are at the core of the **innovation web** beyond the traditional collaborative R&D consortia

EIT's ENGINE: ITS INNOVATION FACTORIES (KICs)

The Knowledge and Innovation Communities (KICs):

- highly integrated, creative and excellence-driven autonomous long-term partnerships
- internationally distributed but thematically convergent partners
- driven by societal challenges and fostering the emergence of entrepreneurs



THE KIC MODEL (1/2)

- **High degree of integration:** each KIC is an independent legal entity, gathering world-class KIC partners from the knowledge triangle based on a contractual relationship/partnership with the EIT.
- **Long-term strategic approach:** each KIC is set up for a minimum of 7 years to eventually become self sustainable.
- **Sufficient autonomy and flexibility:** to determine organisational structure and activities governed by a Board of KIC partner organisations
- **Effective governance:** run by a CEO and a lean management team at central and co-location level.

THE KIC MODEL (2/2)

- **Smart funding & high degree of commitment of partners:** EIT funding to KICs is max. 25% of their total budget over time with 75% to be attracted from other sources, both public and private.
- **Results/High-Impact-oriented activities:** KICs implement a Business Plan with measurable deliverables, results and impact
- **Culture:** KICs are shaped by strong entrepreneurial mindsets and cultures
- **The co-location model:** each KIC consists of 5-6 world class innovation hotspots building and leveraging on existing European capacities.

KICs' EUROPEAN IMPACT & GOOD PRACTICE

Climate-KIC:

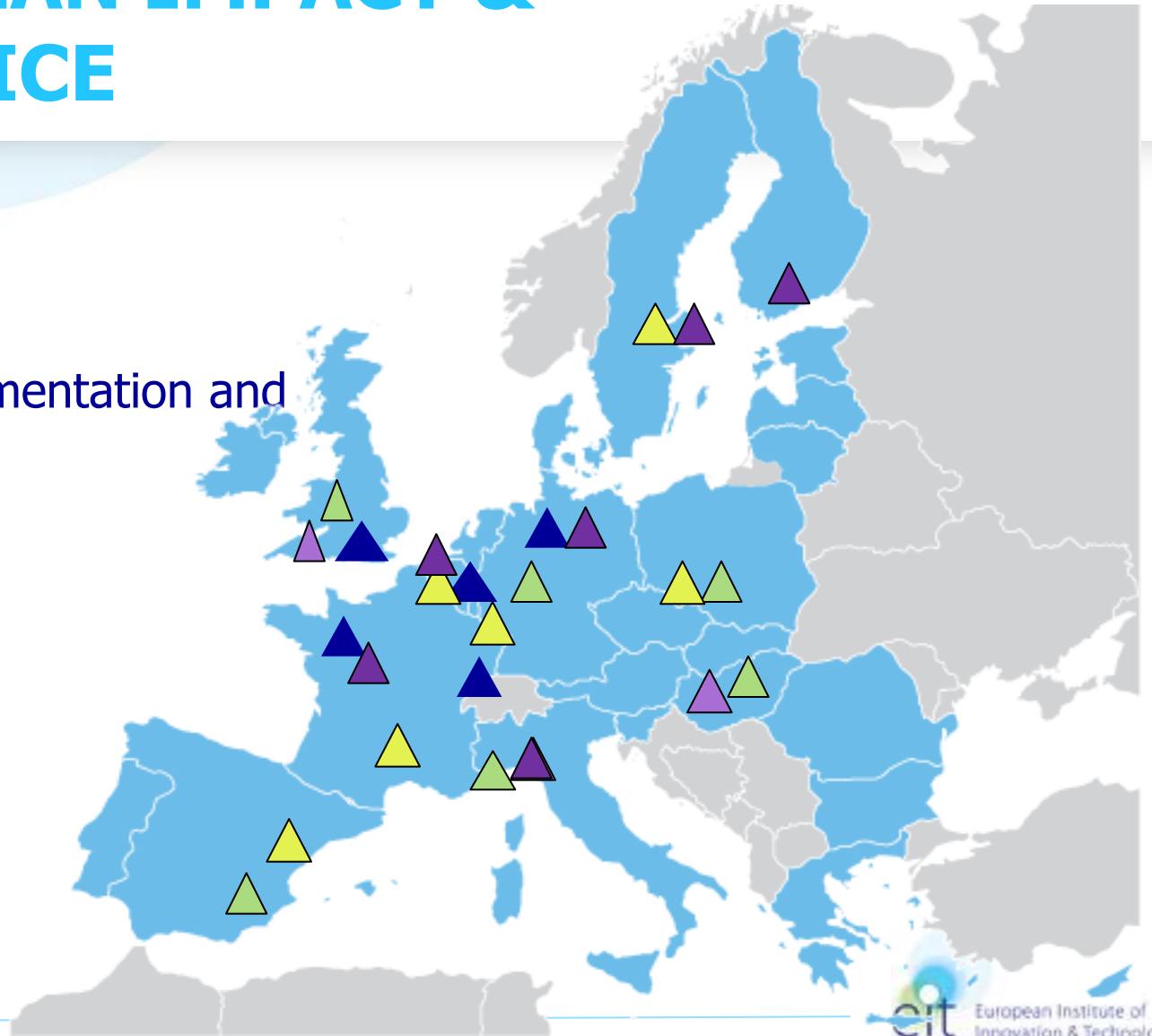
- ▲ Co-location centre
- ▲ RIC (Regional Implementation and Innovation Centre)

EIT ICT Labs:

- ▲ Co-location centre
- ▲ Associate Partner

KIC InnoEnergy

- ▲ Co-location centre



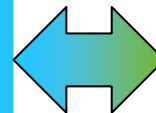
EIT DRIVING CROSS-KIC AGENDAS

EDUCATION

Promoting excellent education for creativity, innovation and entrepreneurship by high quality EIT labelled degree programmes, fostering a vibrant EIT student & alumni community.

ENTREPRENEURSHIP

Promoting a risk taking mindset and culture by creating more favourable environments for passionate entrepreneurial talent and entrepreneurship driven innovation to flourish.



WORLD-CLASS INNOVATION

Developing innovative ecosystems to create and grow world-class, breakthrough innovations by exploiting KIC synergies and complementarities at European level (cross-border).



... Research on the move! ...

... Innovation powered by EIT! ...

... Entrepreneurs in the making! ...